



**LEGEND:**

- SUBSECTION EXTENTS
- COMMON ROUTE CORRIDOR
- ROUTE CORRIDOR OPTIONS (VARYING COLOURS)
- SPECIAL PROTECTION AREA (SPA)
- SPECIAL AREA OF CONSERVATION (SAC)
- INDICATIVE EXTENTS OF START AND END OF GREENWAY

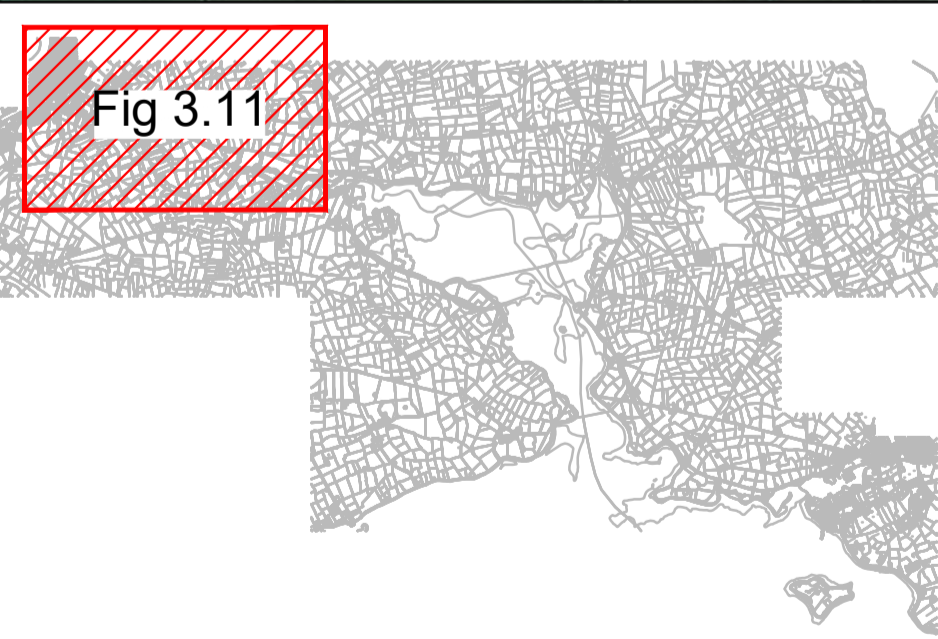
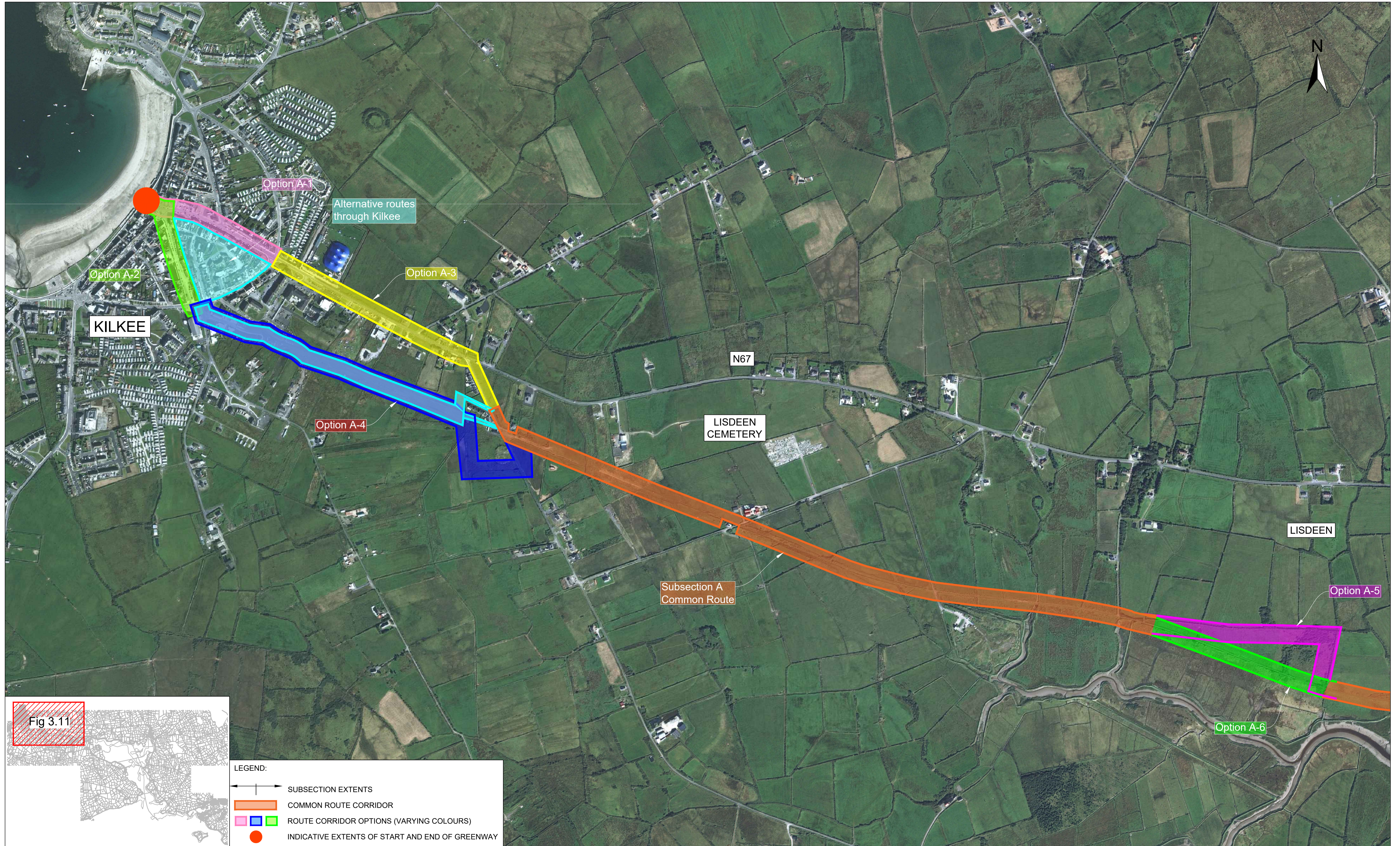


**ROUGHAN & O'DONOVAN**  
CONSULTING ENGINEERS

Offices:  
Dublin - Sandford & Santry  
Leeds - Otey  
Ireland t +353 (0) 1 294 0800  
UK t +44 (0) 113 360 1720

Project Title	WEST CLARE RAILWAY GREENWAY SECTION 1: KILRUSH TO KILKEE	
<b>ENVIRONMENTAL IMPACT ASSESSMENT REPORT</b>		

Drawing Title:			STAGE 2 REFINED ROUTE CORRIDOR OPTIONS		
Drawn: LA	File:	Status: E.I.A.R.	Job No: 21.121	Scale: N.T.S.	Drawing No: Fig 3.5
Designed: BF	Checked: LL	Approved: EOC	Date: January 2026	Rev: P0	



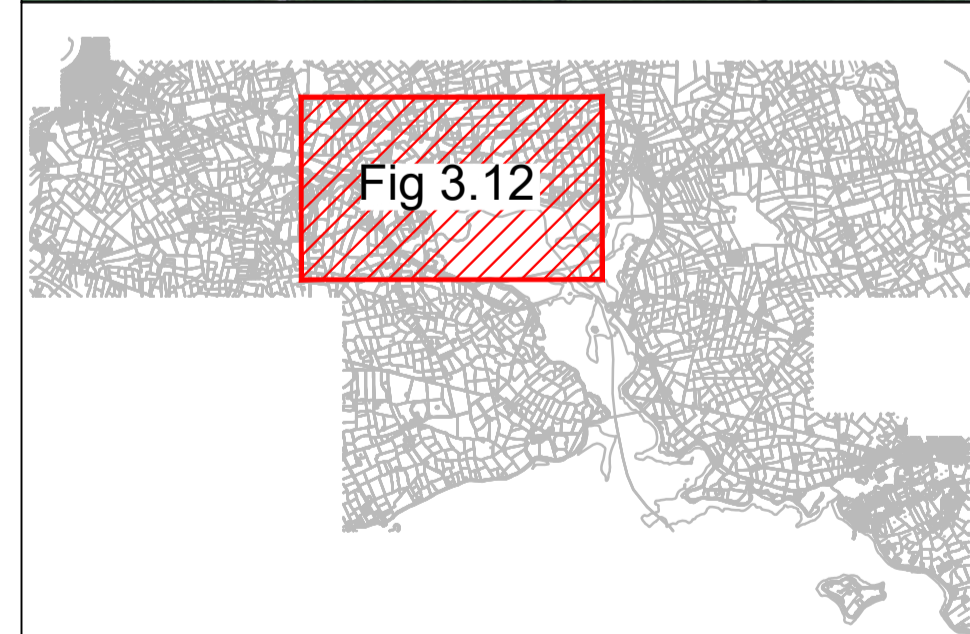
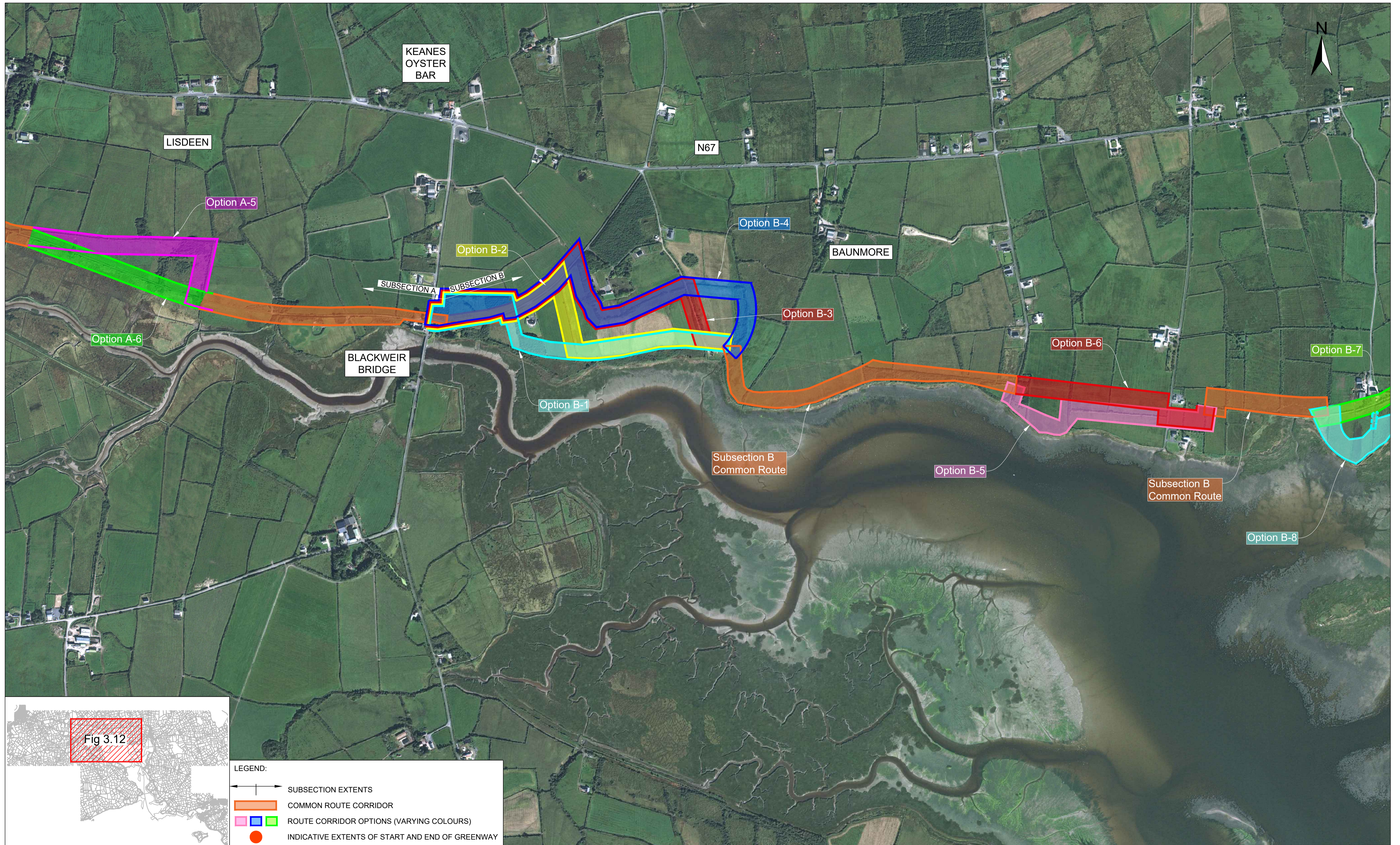
ROUGHAN & O'DONOVAN  
CONSULTING ENGINEERS

Offices:  
Dublin - Sandycroft & Santry  
Leeds - Otey  
Ireland t +353 (0) 1 294 0800  
UK t +44 (0) 113 360 1720

Project Title  
WEST CLARE RAILWAY GREENWAY  
SECTION 1: KILRUSH TO KILKEE

ENVIRONMENTAL IMPACT ASSESSMENT REPORT

Drawing Title:		ROUTE CORRIDOR OPTIONS IN SUBSECTION A	
Drawn: LA	File:	Status:	E.I.A.R.
Designed: BF	Job No: 21.121	Checked: LL	Scale: 1:5,000
Approved: EOC	Date: January 2026	Drawing No:	Fig 3.6
		Rev:	P0



**LEGEND:**

- ← → SUBSECTION EXTENTS
- COMMON ROUTE CORRIDOR
- ROUTE CORRIDOR OPTIONS (VARYING COLOURS)
- INDICATIVE EXTENTS OF START AND END OF GREENWAY



**ROUGHAN & O'DONOVAN**  
CONSULTING ENGINEERS

Offices:  
Dublin - Sandycroft & Santry  
Leeds - Otey  
Ireland t +353 (0) 1 294 0800  
UK t +44 (0) 113 360 1720

Project Title	WEST CLARE RAILWAY GREENWAY SECTION 1: KILRUSH TO KILKEE	
	<b>ENVIRONMENTAL IMPACT ASSESSMENT REPORT</b>	

Drawing Title:			ROUTE CORRIDOR OPTIONS IN SUBSECTION B		
Drawn:	LA	File:		Status:	E.I.A.R.
Designed:	BF	Job No:	21.121	Drawing No:	Fig 3.7
Checked:	LL	Scale:	1:5,000	Rev:	P0
Approved:	EOC	Date:	January 2026		

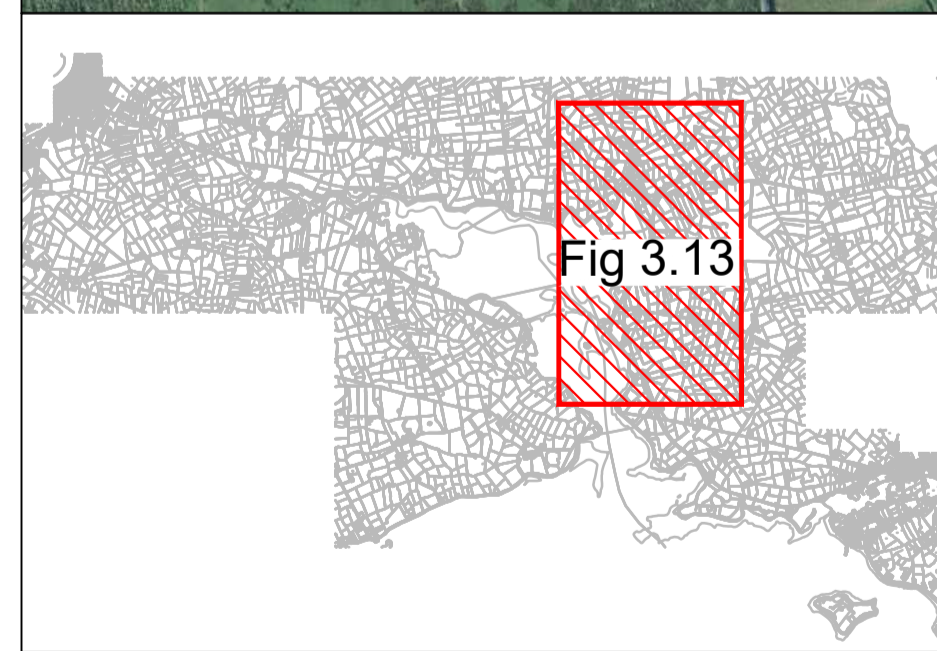
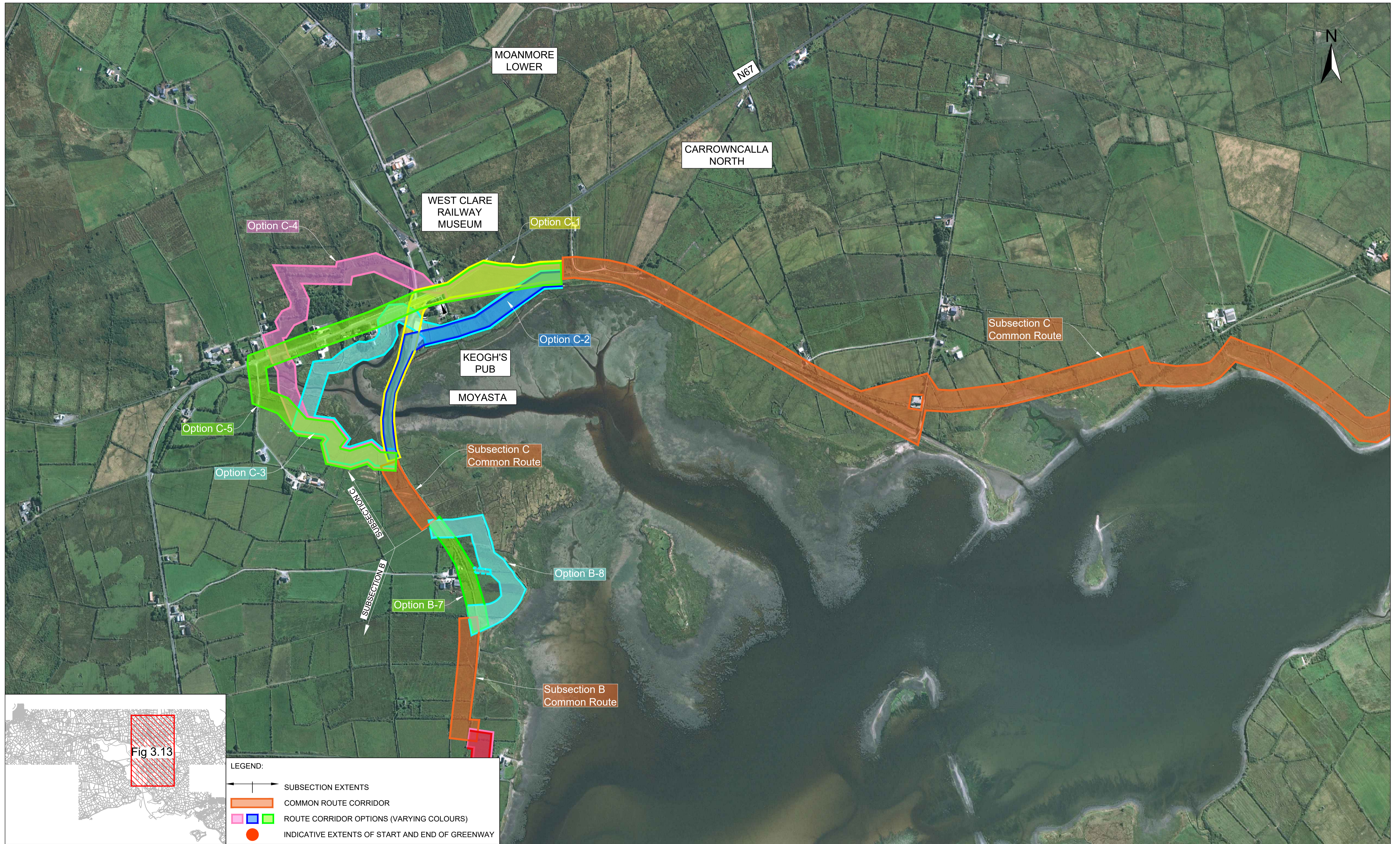


Fig 3.13

**LEGEND:**

- ← → SUBSECTION EXTENTS
- COMMON ROUTE CORRIDOR
- █ ROUTE CORRIDOR OPTIONS (VARYING COLOURS)
- INDICATIVE EXTENTS OF START AND END OF GREENWAY



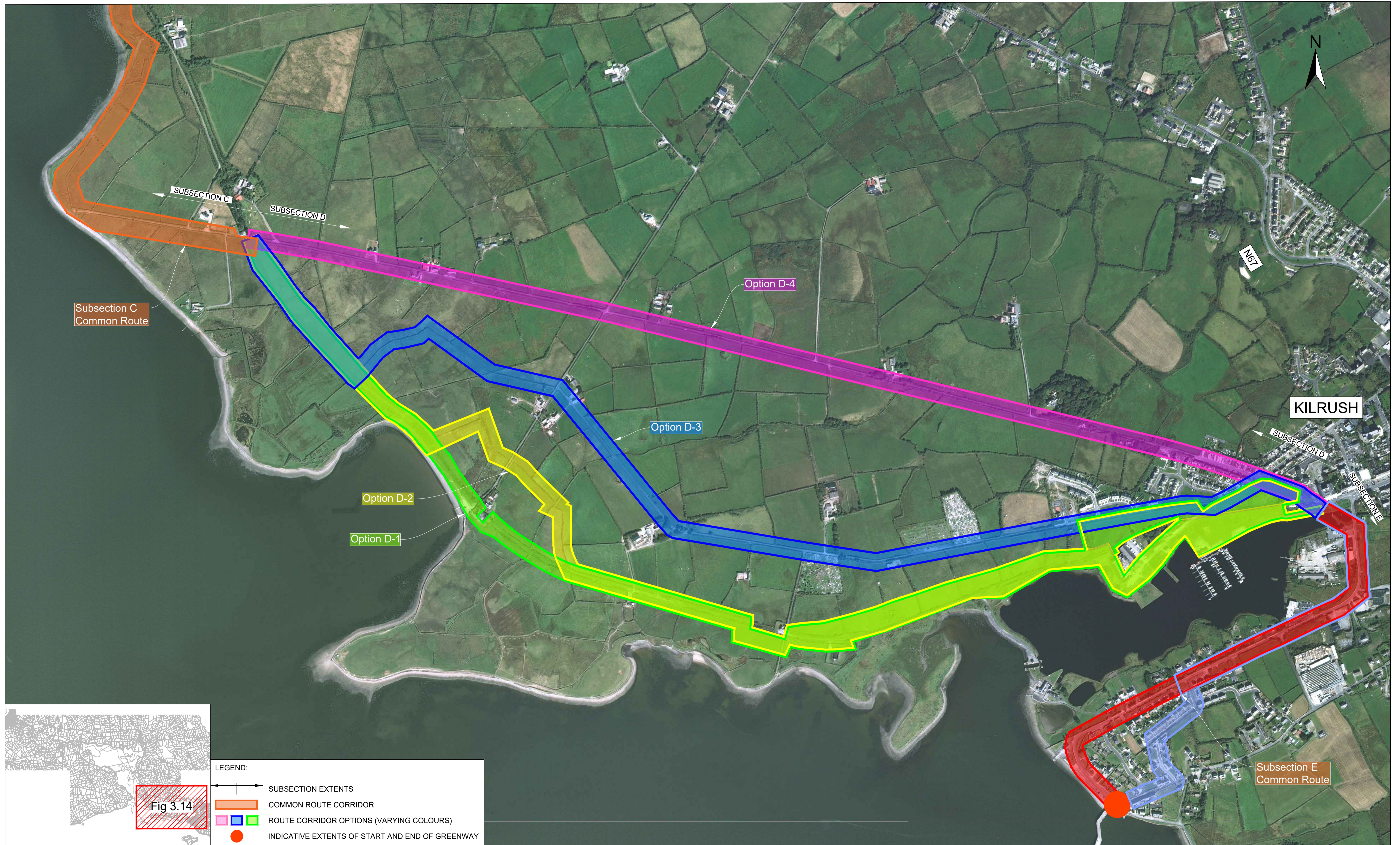
**ROUGHAN & O'DONOVAN**  
CONSULTING ENGINEERS

Offices:  
 Dublin - Sandford & Santry  
 Leeds - Otley  
 Ireland t +353 (0) 1 294 0800  
 UK t +44 (0) 113 360 1720

Project Title  
**WEST CLARE RAILWAY GREENWAY**  
**SECTION 1: KILRUSH TO KILKEE**

**ENVIRONMENTAL IMPACT ASSESSMENT REPORT**

Drawing Title: <b>ROUTE CORRIDOR OPTIONS IN SUBSECTION C</b>		
Drawn: LA	File:	Status: E.I.A.R.
Designed: BF	Job No: 21.121	
Checked: LL	Scale: 1:5,000	Drawing No: Fig 3.8
Approved: EOC	Date: January 2026	Rev: P0



**LEGEND:**

- ← → SUBSECTION EXTENTS
- COMMON ROUTE CORRIDOR
- ROUTE CORRIDOR OPTIONS (VARYING COLOURS)
- INDICATIVE EXTENTS OF START AND END OF GREENWAY



**ROUGHAN & O'DONOVAN**  
CONSULTING ENGINEERS

Offices:  
Dublin - Sandford & Santry  
Leeds - Otley  
Ireland t +353 (0) 1 294 0800  
UK t +44 (0) 113 360 1720

Project Title	WEST CLARE RAILWAY GREENWAY SECTION 1: KILRUSH TO KILKEE	
	<b>ENVIRONMENTAL IMPACT ASSESSMENT REPORT</b>	

Drawing Title:	ROUTE CORRIDOR OPTIONS IN SUBSECTION D & SUBSECTION E		
Drawn:	LA	File:	
Designed:	BF	Job No:	21.121
Checked:	LL	Scale:	1:5,000
Approved:	EOC	Date:	January 2026
		Drawing No:	Fig 3.9
		Status:	E.I.A.R.
		Rev:	P0